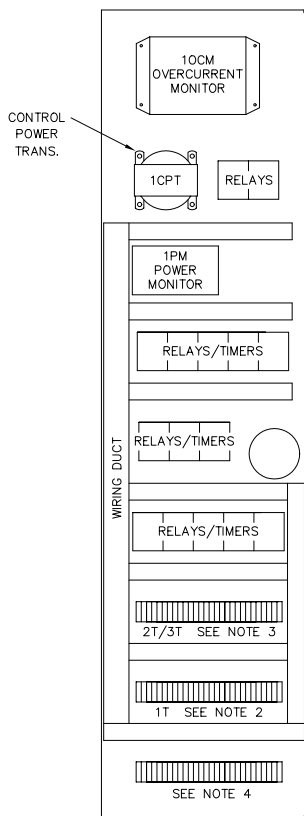
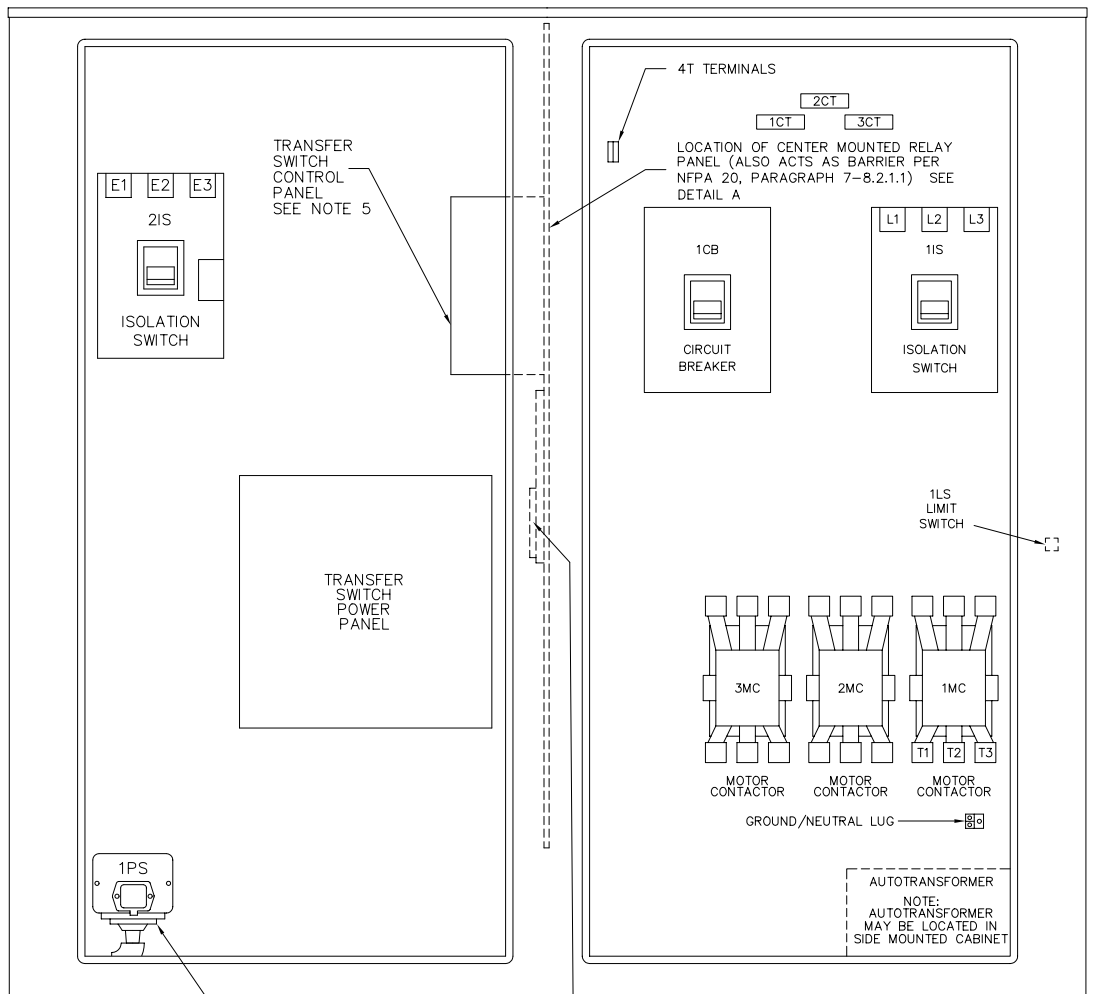


1T\*  
FIELD  
TERMINALS

- |    |    |   |
|----|----|---|
| 1  | 1  | N.O. CONTACT. OPENS ON<br>LOSS OF CONTROLLER POWER  |
| 2  | 2  |   |
| 3  | 3  | N.C. CONTACT. CLOSES ON<br>LOSS OF CONTROLLER POWER |
| 4  | 4  |   |
| 5  | 5  | N.O. CONTACT. CLOSES<br>WHEN PUMP RUNNING           |
| 6  | 6  |   |
| 7  | 7  | N.C. CONTACT. OPENS<br>WHEN PUMP RUNNING            |
| 8  | 8  |   |
| 9  | 9  | REMOTE START. PUMP WILL<br>START WHEN SWITCH CLOSES |
| 10 | 10 |   |
| 11 |    |   |
| 12 |    |   |
| 13 |    |   |
| 14 |    |   |
| 15 |    |   |
| 16 |    |   |
| 17 |    |   |
| 18 | 18 | N.O. CONTACT. CLOSES<br>ON PHASE REVERSAL           |
| 19 | 19 |   |
| 20 | 20 | N.C. CONTACT. OPENS<br>ON PHASE REVERSAL            |
| 21 | 21 |   |
| 22 | 22 | N.O. CONTACT. OPENS<br>ON MOTOR OVERLOAD            |
| 23 | 23 |   |



DETAIL A  
CENTER MOUNTED  
RELAY PANEL

NOTES:

- POWER MONITOR SIGNALS ANY OF THE FOLLOWING FAILURES:  
LOW VOLTAGE  
LOSS OF VOLTAGE  
PHASE REVERSAL
- 1T FIELD TERMINALS ARE LOCATED AT BOTTOM OF SIDE MOUNTED RELAY PANEL. SEE DETAIL A
- 2T, 3T & MANUAL STOP JUMPER ARE LOCATED IN THIS AREA.
- EXTRA (OPTIONAL) TERMINALS ARE LOCATED IN THIS AREA.
- SEE ASCO OPERATION MANUAL FOR LOCATION OF DIP SWITCHES.

- |   |  |
|---|--|
| G | EMERGENCY ISOLATION<br>SWITCH OPEN       |
| H |  |
| J | TRANSFER SWITCH IN<br>EMERGENCY POSITION |
| K |  |
| L | OPEN FOR ENGINE START                    |
| M |  |
| N | CLOSE FOR ENGINE START                   |

MAXIMUM MOTOR HORSEPOWER	VOLTS AC					PRIMARY WIRE SIZE	
	200V	208V	220V - 240V	380V - 415V	440V - 480V	LINE TERMINAL WIRE SIZE PER PHASE	SERVICE ENTRANCE GROUND LUG WIRE SIZE
25 HP	25 HP	30 HP	50 HP	60 HP	#14-1/0 AWG	(2) #10-1/0 AWG	
40 HP	40 HP	50 HP	75 HP	100 HP	#4-4/0 AWG	(2) #10-1/0 AWG	
60 HP	75 HP	75 HP	125 HP	150 HP	#4-350 MCM	(2) #10-1/0 AWG	
100 HP	125 HP	125 HP	200 HP	250 HP	(2) #3/0-250 MCM	(2) #10-1/0 AWG	
150 HP	150 HP	200 HP	300 HP	400 HP	(2) #3/0-350 MCM	(2) #6-250 MCM	

DRAWN	SR	5-22-98		<b>METRON, INC.</b> DENVER, CO.	
CHECK	KH.	5-22-98			
APPD	X.B.	5-22-98			
INTERNAL LAYOUT & EXTERNAL HOOKUP MODEL M450, UTILITY/GEN-SET ELECTRIC FIRE PUMP CONTROLLER WITH ASCO TRANSFER SWITCH, GROUP 1				CH33019C	
SCALE				N.T.S	SHEET 1 OF 1